

**NOLD
FAMILY
ANGUS**



FRIDAY *25th Annual Bull Sale*
MAY 3, 2024

1:00 PM • Hub City Livestock, Aberdeen, SD



*Featuring
Sons of*

Basin Spur 0210 • FAR Quality 1151 • Freys True Grit 0105 • Basin Deposit 1226
FAR Opportunity 1273 • Woodhill Complete • KR Synergy • Freys Quality 0187
FF Conclusion F83 • Lau Synergy 380 • Lau Synergy 660



FRIDAY

25th Annual Bull Sale

MAY 3, 2024

1:00 PM • Hub City Livestock, Aberdeen, SD

CHUCK NOLD 605.769.1272 MARK NOLD 605.769.1273 JACK NOLD 605.769.1274
15207 331ST AVE ONAKA, SD 57466

Sale Day Team

Auctioneer: Dustin Carter 712.898.9972
Hub City Livestock 605.225.3273
Chuck Nold 605.769.1272
Mark Nold..... 605.769.1273
Jack Nold 605.769.1274
Donnie Leddy, *The Cattle Business Weekly* 605.695.0113
Jeff Kapperman, *Tri-State Neighbor* 605.940.5104

Please contact Chuck or any of our sale day team if you are unable to attend the sale. Phone bids will be handled as if you are present.

Nutrition

Our feedstuffs are rumen-based, with rations formulated by LD Henrichs of McNess Feeds. The bulls are fed high-roughage nutrition with developmental emphasis on long-lasting breeding animals.

Health

The health protocol of our herd, including these bulls, is proactive and comprehensive. Booster/pre-sale regimen includes IBR, BVD, P13, BRSV, with Lepto-Vibrio & Harjo bovis. Also reboostered Mycoplasma, Foot Rot and Pink-Eye. They have been wormed and poured again. Our herd health management is administered under Dr. Teri Todd with consultant Mark Nold, through the product lines of Nold Animal Supply. For more information, see the link on our website.

Customer Service

Give us a call if you're having a problem or have a question about one of our bulls. We always want to work with you to "make it right," within reason. We breed and feed for durability and stand behind what we sell.

Semen

All bulls are semen tested. A report for each animal is available upon request. NFA retains one-third semen interest on all bulls sold.



Keep checking website and Facebook page for updated sale bull information.



NOLDANGUS.COM



NOLD FAMILY ANGUS

To Our fellow Cattle Producers:

What a spring we had and are still having. In computer speak, I guess it would be called user friendly. That being said, we take some pride in our herd being able to literally weather whatever weather Mother Nature tends to throw at us. But the boys and I are still very thankful for the 2024 calving conditions, over 2023. It will be awhile, before any of us forget that one!

And so here are the 2024 bulls. They're a darn good set. We remain focused on big picture balance: cattle that do the best job of utilizing your resources; cattle that can be easily handled; cattle that are structurally correct. To us, this is functional herd production at its best, developed for longevity and optimum marketplace value.

Besides the herd sires listed in this catalog, we also have some Synergy calves in the offering. It's a line that produces calvability and great mothering ability. We love talking about ALL our bull calves—but boy, we wish you could see the cows that produce them. I have to say, we are pretty proud of the girls that make up our herd.

I can't close without talking about the dogs, specifically the Labs. Last year we had Semper at the bull sale. A month later, he was paired with his veteran—he was the 140th dog given away by Labs For Liberty.



Chuck

Thanks for your time, interest and support of Nold Family Angus.

Chuck



Mark



Jack



Katie



REFERENCE SIRES



BASIN SPUR 0210

Reg No: 19751774 Tattoo: 0210 BD: 2/28/20

Connealy Spur
 Vermilion Spur E143
 Basin Joy 7510
 Basin Joy 2006

Connealy Stimulus 8419
 Jazza of Conanga 8594
 KG Sure Shot 0015
 Vermilion Blackbird 4468
 Vermilion Blackbird 1465
 G A R Progress
 Basin Advance 3134
 Basin O Lass 1663
 Summitcrest Complete 1P55
 Basin Joy 566T

Sire	
EPD	ACC
Birth	1.9 .90
Wean	69 .88
Milk	39 .67
Year	135 .84
Dam	
EPD	ACC
Birth	2.1 .59
Wean	71 .51
Milk	40 .43
Year	121 .44

BW EPD	WW EPD	MILK EPD	YW EPD	ACT BW	205 WT	205 RATIO	365 WT	365 RATIO	ACT SC
5.2	96	36	167						

He throws tremendously long bodied calves with a lot of thickness on the top. They're the kind of calves Steve Hellwig likes to sell. We've now calves his first daughters and will definitely see his influence carrying forward. He is breeding more consistent than his grandsire, Connealy Spur.



FREYS TRUE GRIT

Reg No: 19824750 Tattoo: 0105 BD: 01/16/20

Freys Cowboy Logic
 F A R Princess 148Z
 Freys Appearance
 FAR Fair Lady 8094
 FAR Fair Lady 71B

HA Outside 3008
 HA Cowboy Up 5405
 HA Blackcap Lady 1602
 WK Bobcat
 F A R Princess 214X
 Young Dale Xcaliber 32X
 F A R Missie 62Y
 HCC Hannaford
 F A R Fair Lady 49U

Sire	
EPD	ACC
Birth	-0.3 .89
Wean	63 .86
Milk	26 .56
Year	120 .79
Dam	
EPD	ACC
Birth	0.7 .58
Wean	59 .52
Milk	35 .40
Year	98 .46

BW EPD	WW EPD	MILK EPD	YW EPD	ACT BW	205 WT	205 RATIO	365 WT	365 RATIO	ACT SC
-0.8	73	29	130						

He was the attention getter in Frey's carload for the inaugural Cattlemen's Congress. True isn't your typical calving ease sire offered in commercial semen catalogs. Calves are consistently 70-75 lbs on 1st calf heifers with great vigor! Offers more body length when compared to other contemporary calving ease sires.



REFERENCE SIRES

Grandsire: Basin Deposit 6249



BASIN DEPOSIT 1226

Reg No: 20091490 Tattoo: 1226 BD: 03/03/21

Basin Deposit 6249
 Basin Lucy 4288
 Basin Lucy 6262
 Basin Lucy 1037

G A R Progress
 Basin Advance 3134
 G A R Progress
 EXAR Denver 2002B
 Basin Lucy 1037
 B/R Future Direction 4268
 WR Journey-1X74
 2 Bar 5050 New Design 7831
 Gardens Wave
 Basin Lucy 2625

Sire		
	EPD	ACC
Birth	2.5	.85
Wean	83	.85
Milk	23	.54
Year	135	.85
Dam		
	EPD	ACC
Birth	0.9	.63
Wean	49	.56
Milk	28	.44
Year	81	.50

BW EPD	WW EPD	MILK EPD	YW EPD	ACT BW	205 WT	205 RATIO	365 WT	365 RATIO	ACT SC
1.9	75	17	119						

He carries on the great Basin Deposit tradition of strongly influencing the carcass side of the equation. But 1226 also does so much more than that. We used him as clean-up on first calf heifers and never had to worry about assisting anything bred to this bull.



FAR QUALITY 1151

Reg No: 20113115 Tattoo: 1151 BD: 02/09/21

KR Quality 8525
 F A R Princess 250A
 F A R Princess 214W

TEF Outside 514
 KR Lucy Rose 6587
 Barstow Cash

HA Outside 3008
 T E F Jet Princess 714
 May-Way Equity
 KR Lucy Rose 4086
 Sitz Dash 10277
 Barstow Queen W16
 C R A Bextor 872 5205 608
 F A R Princess 202T

Sire		
	EPD	ACC
Birth	2.3	.87
Wean	92	.84
Milk	30	.44
Year	170	.74
Dam		
	EPD	ACC
Birth	1.7	.67
Wean	55	.62
Milk	25	.44
Year	104	.54

BW EPD	WW EPD	MILK EPD	YW EPD	ACT BW	205 WT	205 RATIO	365 WT	365 RATIO	ACT SC
3.2	65	25	119						

This is a generational bull, with so many good things to say about him. We selected this Quality son from Freys and have never looked back. He's big, easy keeping and breeds with so much consistency. His breeds length, frame, thickness and muscle shape in a clean phenotype. His daughters will be great foundation builders for the future.

MARTIN-TRUDEAU INSURANCE

LIVESTOCK DIVISION



A representative from the livestock division of Martin-Trudeau Insurance will be at our sale. A very good breeding bull insurance policy through Martin-Trudeau will be available for each animal purchased on sale day. If you choose to buy coverage, Nold Family Angus will pay HALF of your premium for any bulls you bought, that were \$3000 and over.

Additionally, bulls selling for more than \$3000 are guaranteed for 90 days from first turnout, against breeding injury. If a replacement bull is available, he will be provided. If a replacement bull is not available, credit will be given at next year's NFA bull sale. Credit will be for the purchase price, less salvage value of the injured bull, to be used for the purchase of one replacement bull. Please notify us as soon as possible should injury occur and prior to the injured bull being sold for salvage. All claims must be made prior to Oct. 1, 2023. This is not a mortality insurance policy.

SPUR BULLS

LOT 1 **NFA 3107**
 Reg. No. 20937708 **Tattoo: 3107** **DOB: 02/20/23**

Connealy Spur
 Vermilion Spur E143
 Vermilion Blackbird 4468

Basin Spur 0210
 Basin Advance 3134
 Basin Joy 7510
 Basin Joy 2006

SydGen C C & 7
 H&K CC&7 G452
 Blkcp Empress Ellston B513

NFA Lady Katrina C641
 H&K Gridiron C16
 NFA Lady Katrina T813
 NFA Lady Katrina N308

SIRE		EPD	ACC
Birth	+ 5.2	0.57	
Wean	+ 96	0.49	
Milk	+ 36	0.33	
Year	+ 167	0.44	
DAM		EPD	ACC
Birth	+ 4.2	0.36	
Wean	+ 53	0.20	
Milk	+ 18	0.19	
Year	+ 88	0.17	

BW	WW	MILK	YW	Actual	205 Day	205 Day	365 Day	365 Day	Actual
EPD	EPD	EPD	EPD	RW	Weight	Ratio	Weight	Ratio	Scrotal
I +4.7	I +75	I +27	I +128	76	0	0	0	0	0.00



LOT 2 **NFA 3219**
 Reg. No. 20938353 **Tattoo: 3219** **DOB: 04/04/23**

Connealy Spur
 Vermilion Spur E143
 Vermilion Blackbird 4468

Basin Spur 0210
 Basin Advance 3134
 Basin Joy 7510
 Basin Joy 2006

Connealy Earnan 076E
 Musgrave Big Sky
 SAV Primrose 7861

NFA Prairie Queen E315
 NFA Finite Y288
 NFA Prairie Queen A428
 NFA Prairie Queen X104

SIRE		EPD	ACC
Birth	+ 5.2	0.57	
Wean	+ 96	0.49	
Milk	I + 36	0.33	
Year	I + 167	0.44	
DAM		EPD	ACC
Birth	I + 1.7	0.05	
Wean	I + 61	0.05	
Milk	I + 24	0.05	
Year	I + 102	0.05	

BW	WW	MILK	YW	Actual	205 Day	205 Day	365 Day	365 Day	Actual
EPD	EPD	EPD	EPD	RW	Weight	Ratio	Weight	Ratio	Scrotal
0.0	0	0	0	91	0	0	0	0	0.00



LOT 3 **NFA 3223**
 Reg. No. 20938354 **Tattoo: 3223** **DOB: 04/06/23**

Connealy Spur
 Vermilion Spur E143
 Vermilion Blackbird 4468

Basin Spur 0210
 Basin Advance 3134
 Basin Joy 7510
 Basin Joy 2006

Sitz Upward 307R
 Koupals B&B Identity
 B&B Erica 605

NFA Becky Edella D154
 Hoff Preference SC 461 266
 NFA Becky Edella W978
 NFA Becky Edella S672

SIRE		EPD	ACC
Birth	+ 5.2	0.57	
Wean	+ 96	0.49	
Milk	+ 36	0.33	
Year	+ 167	0.44	
DAM		EPD	ACC
Birth	+ 3.1	0.23	
Wean	+ 54	0.21	
Milk	+ 27	0.21	
Year	+ 99	0.20	

BW	WW	MILK	YW	Actual	205 Day	205 Day	365 Day	365 Day	Actual
EPD	EPD	EPD	EPD	RW	Weight	Ratio	Weight	Ratio	Scrotal
I +4.2	I +75	I +32	I +133	98	0	0	0	0	0.00



WATCH OUR WEBSITE FOR UPDATES WWW.NOLDANGUS.COM

SPUR BULLS

LOT 4 **NFA 3239**
 Reg. No. 20938355 Tattoo: 3239 DOB: 04/14/23

Connealy Spur
 Vermilion Spur E143
 Vermilion Blackbird 4468

Basin Spur 0210
 Basin Advance 3134
 Basin Joy 7510
 Basin Joy 2006

Baldridge Kaboom K243 KCF
 Connealy Thunder
 Parka of Conanga 241

NFA Melissa C521
 Onward 910 S D G
 NFA Melissa A499
 N F A Melissa P581

SIRE		EPD	ACC
Birth	+ 5.2	0.57	
Wean	+ 96	0.49	
Milk	+ 36	0.33	
Year	+ 167	0.44	
DAM		EPD	ACC
Birth	+ 1.3	0.38	
Wean	+ 39	0.24	
Milk	+ 21	0.22	
Year	+ 75	0.21	

BW	WW	MILK	YW	Actual	205 Day	205 Day	365 Day	365 Day	Actual
EPD	EPD	EPD	EPD	RW	Weight	Ratio	Weight	Ratio	Scrotal
I +3.3	I +68	I +29	I +121	92	0	0	0	0	0.00



LOT 5 **NFA 3265**
 Reg. No. 20938552 Tattoo: 3265 DOB: 04/20/23

Connealy Spur
 Vermilion Spur E143
 Vermilion Blackbird 4468

Basin Spur 0210
 Basin Advance 3134
 Basin Joy 7510
 Basin Joy 2006

Carter's Payweight 1682-C204
 NFA Payup E721
 NFA Siara Gal C574

NFA Blackcap Mc Henry G562
 Musgrave Big Sky
 NFA Blackcap Mc Henry D654
 NFA Blackcap Mc Henry A329

SIRE		EPD	ACC
Birth	+ 5.2	0.57	
Wean	+ 96	0.49	
Milk	I + 36	0.33	
Year	I + 167	0.44	
DAM		EPD	ACC
Birth	I + 1.8	0.05	
Wean	I + 60	0.05	
Milk	I + 26	0.05	
Year	I + 110	0.05	

BW	WW	MILK	YW	Actual	205 Day	205 Day	365 Day	365 Day	Actual
EPD	EPD	EPD	EPD	RW	Weight	Ratio	Weight	Ratio	Scrotal
0.0	0	0	0	66	0	0	0	0	0.00

LOT 6 **NFA 3268**
 Reg. No. Tattoo: 3268 DOB: 04/21/23

Connealy Spur
 Vermilion Spur E143
 Vermilion Blackbird 4468

Basin Spur 0210
 Basin Advance 3134
 Basin Joy 7510
 Basin Joy 2006

VAR Rocky 80029
 CN Rocky 910 RAML
 DS 3726 Freedom Lady 65 CW

NFA Clova Pride B590
 Lemmon Newline C804
 KMD Clova Pride 732
 K M D 598 196G

SIRE		EPD	ACC
Birth	+ 5.2	0.57	
Wean	+ 96	0.49	
Milk	+ 36	0.33	
Year	+ 167	0.44	
DAM		EPD	ACC
Birth	+ 0.0	0.00	
Wean	+ 0	0.00	
Milk	+ 0	0.00	
Year	+ 0	0.00	

BW	WW	MILK	YW	Actual	205 Day	205 Day	365 Day	365 Day	Actual
EPD	EPD	EPD	EPD	RW	Weight	Ratio	Weight	Ratio	Scrotal
0.0	0	0	0	98	0	0	0	0	0.00



SPUR & TRUE GRIT BULLS



LOT 7

LOT 7 **NFA 3283**
 Reg. No. 20938554 **Tattoo: 3283** **DOB: 04/28/23**

Connealy Spur
 Vermillion Spur E143
 Vermillion Blackbird 4468

Basin Spur 0210
 Basin Advance 3134
 Basin Joy 7510
 Basin Joy 2006

Soo Line Motive 9016
 Koupals B&B Motive 3032
 B&B Zara 7022

NFA Blackbird D660
 Koupals B&B Identity
 NFA Blackbird B422
 Blackbird of Ellston E199

SIRE		EPD	ACC
Birth	+ 5.2	0.57	
Wean	+ 96	0.49	
Milk	+ 36	0.33	
Year	+ 167	0.44	

DAM		EPD	ACC
Birth	+ 0.3	0.30	
Wean	+ 49	0.25	
Milk	+ 24	0.24	
Year	+ 89	0.22	

BW	VW	MILK	YW	Actual	205 Day	205 Day	365 Day	365 Day	Actual
EPD	EPD	EPD	EPD	RW	Weight	Ratio	Weight	Ratio	Scrotal
I +2.8	I +73	I +30	I +128	90	0	0	0	0	0.00

LOT 8 **NFA 3117**
 Reg. No. 20937709 **Tattoo: 3117** **DOB: 02/26/23**

HA Cowboy Up 5405
 Freys Cowboy Logic
 FAR Princess 148Z

FREYS True Grit
 Freys Appearance
 FAR Fair Lady 8094
 FAR Fair Lady 71B

Carter's Payweight 1682-C204
 CW 334 C204 Payweight 187
 CW 027 Queen Eva 334

NFA Kimbry Gal J136
 Ponca Creek Pepper
 NFA Kimbry Gal F812
 NFA Kimbry Gal D692

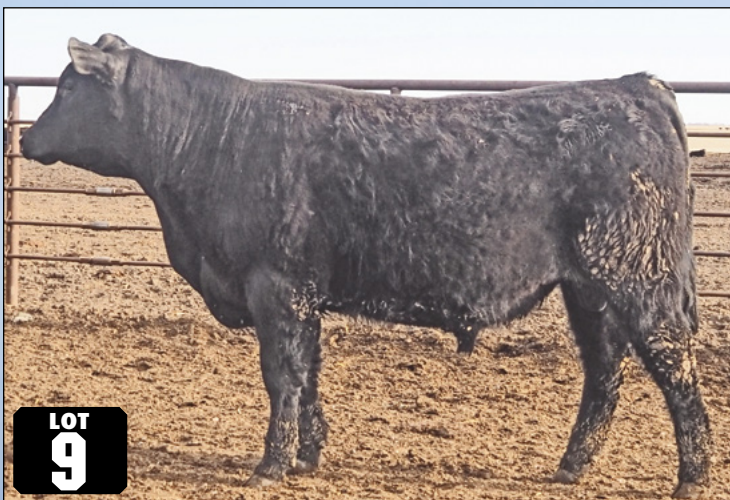
SIRE		EPD	ACC
Birth	-0.8	0.84	
Wean	+ 73	0.80	
Milk	I + 29	0.32	
Year	I + 130	0.68	

DAM		EPD	ACC
Birth	I + 1.0	0.05	
Wean	I + 61	0.05	
Milk	I + 27	0.05	
Year	I + 110	0.05	

BW	VW	MILK	YW	Actual	205 Day	205 Day	365 Day	365 Day	Actual
EPD	EPD	EPD	EPD	RW	Weight	Ratio	Weight	Ratio	Scrotal
0.0	0	0	0	71	0	0	0	0	0.00



LOT 8



LOT 9

LOT 9 **NFA 3159**
 Reg. No. **Tattoo: 3159** **DOB: 03/16/23**

HA Cowboy Up 5405
 Freys Cowboy Logic
 FAR Princess 148Z

FREYS True Grit
 Freys Appearance
 FAR Fair Lady 8094
 FAR Fair Lady 71B

A A R Really Windy 1205
 H A R B Windy 702 JH
 H A R B Black Lady 073 J H

NFA Edella Ann J172
 S A V Final Answer 0035
 NFA Edella Ann Y294
 T K Edella 302

SIRE		EPD	ACC
Birth	-0.8	0.84	
Wean	+ 73	0.80	
Milk	I + 29	0.32	
Year	I + 130	0.68	

DAM		EPD	ACC
Birth	I + 1.9	0.05	
Wean	I + 50	0.05	
Milk	I + 22	0.05	
Year	I + 90	0.05	

BW	VW	MILK	YW	Actual	205 Day	205 Day	365 Day	365 Day	Actual
EPD	EPD	EPD	EPD	RW	Weight	Ratio	Weight	Ratio	Scrotal
0.0	0	0	0	76	0	0	0	0	0.00



TRUE GRIT BULLS

LOT 10 **NFA 3120**
 Reg. No. 20937710 **Tattoo: 3120** **DOB: 02/28/23**

HA Cowboy Up 5405
 Freys Cowboy Logic
 FAR Princess 148Z

FREYS True Grit
 Freys Appearance
 FAR Fair Lady 8094
 FAR Fair Lady 71B

Sitz Upward 307R
 Up Start 760
 Chestnut Beauty 319

NFA Princess Maid A323
 S A Made Rite
 NFA Princess Maid Y155
 Bar S Princess 3182

SIRE		EPD	ACC
Birth	-0.8	0.84	
Wean	+73	0.80	
Milk	+29	0.32	
Year	+130	0.68	

DAM		EPD	ACC
Birth	+1.2	0.40	
Wean	+53	0.32	
Milk	+28	0.23	
Year	+88	0.21	

BW	WW	MILK	YW	Actual	205 Day	205 Day	365 Day	365 Day	Actual
EPD	EPD	EPD	EPD	RW	Weight	Ratio	Weight	Ratio	Scrotal
I +0.2	I +63	I +29	I +109	75	0	0	0	0	0.00



LOT 11 **NFA 3162**
 Reg. No. **Tattoo: 3162** **DOB: 03/16/23**

HA Cowboy Up 5405
 Freys Cowboy Logic
 FAR Princess 148Z

FREYS True Grit
 Freys Appearance
 FAR Fair Lady 8094
 FAR Fair Lady 71B

SydGen Enhance
 Baldrige SR Goalkeeper
 Baldrige Isabel E030

NFA Princess Maid J158
 Ponca Creek Pepper
 NFA Princess Maid G953
 NFA Princess Maid E324

SIRE		EPD	ACC
Birth	-0.8	0.84	
Wean	+73	0.80	
Milk	+29	0.32	
Year	+130	0.68	

DAM		EPD	ACC
Birth	+0.0	0.00	
Wean	+0	0.00	
Milk	+0	0.00	
Year	+0	0.00	

BW	WW	MILK	YW	Actual	205 Day	205 Day	365 Day	365 Day	Actual
EPD	EPD	EPD	EPD	RW	Weight	Ratio	Weight	Ratio	Scrotal
0.0	0	0	0	73	0	0	0	0	0.00



LOT 12 **NFA 3133**
 Reg. No. 20937713 **Tattoo: 3133** **DOB: 03/08/23**

HA Cowboy Up 5405
 Freys Cowboy Logic
 FAR Princess 148Z

FREYS True Grit
 Freys Appearance
 FAR Fair Lady 8094
 FAR Fair Lady 71B

A A R Ten X 7008 S A
 Ponca Creek Pepper
 Ponca Creek Blackbird 955

NFA Barbara F807
 Sitz Upward 307R
 Foxs Barbara 46Y
 Foxs Barbara 45

SIRE		EPD	ACC
Birth	-0.8	0.84	
Wean	+73	0.80	
Milk	I +29	0.32	
Year	I +130	0.68	

DAM		EPD	ACC
Birth	I +2.7	0.05	
Wean	I +63	0.05	
Milk	I +24	0.05	
Year	I +116	0.05	

BW	WW	MILK	YW	Actual	205 Day	205 Day	365 Day	365 Day	Actual
EPD	EPD	EPD	EPD	RW	Weight	Ratio	Weight	Ratio	Scrotal
0.0	0	0	0	75	0	0	0	0	0.00



COMPLETE & DEPOSIT BULLS

LOT 13 **NFA 3108**
 Reg. No. 20937716 Tattoo: 3108 DOB: 02/24/23

Basin Franchise P142
 EF Complement 8088
 EF Everelda Entense 6117

Woodhill Complete A130-C2

S A V Final Answer 0035
 K C F Bennett Absolute
 Thomas Miss Lucy 5152

WAR Contractor A442 E225

LC Impact 1890
 WAR Impact A442 U289
 WAR Objective U289 3J15 4015

SIRE		EPD	ACC
Birth	+ 0.1	0.85	
Wean	+ 77	0.85	
Milk	+ 26	0.59	
Year	+ 123	0.83	
DAM		EPD	ACC
Birth	+ 1.0	0.56	
Wean	+ 59	0.48	
Milk	+ 27	0.39	
Year	+ 105	0.43	

BW	WW	MILK	YW	Actual	205 Day	205 Day	365 Day	365 Day	Actual
EPD	EPD	EPD	EPD	RW	Weight	Ratio	Weight	Ratio	Scrotal
I +0.6	I +68	I +27	I +114	85	0	0	0	0	0.00



LOT 14 **NFA 3129**
 Reg. No. 20937712 Tattoo: 3129 DOB: 03/06/23

Basin Advance 3134
 Basin Deposit 6249
 Basin Lucy 4288

Basin Deposit 1226

WR Journey-1X74
 Basin Lucy 6262
 Basin Lucy 1037

Visiontopline Royal Stockman
 Vision Unanimous 1418
 Vision Edella 665

NFA Miss Rito Erin H807

Genetics by Design 049
 NFA Miss Rito Erin T710
 NFA Miss Rito Erin R552

SIRE		EPD	ACC
Birth	+ 1.9	0.48	
Wean	+ 75	0.41	
Milk	+ 17	0.30	
Year	+ 119	0.38	
DAM		EPD	ACC
Birth	+ 3.6	0.26	
Wean	+ 63	0.24	
Milk	+ 21	0.25	
Year	+ 108	0.23	

BW	WW	MILK	YW	Actual	205 Day	205 Day	365 Day	365 Day	Actual
EPD	EPD	EPD	EPD	RW	Weight	Ratio	Weight	Ratio	Scrotal
I +2.8	I +69	I +19	I +114	80	0	0	0	0	0.00

LOT 15 **NFA 3148**
 Reg. No. Tattoo: 3148 DOB: 03/12/23

Basin Advance 3134
 Basin Deposit 6249
 Basin Lucy 4288

Basin Deposit 1226

WR Journey-1X74
 Basin Lucy 6262
 Basin Lucy 1037

Lau Synergy JC 660
 NFA Synergy 2363
 NFA Kay Tesa F278

NFA Blackbird J407

SydGen C C & 7
 NFA Blackbird E495
 Blackbird of Ellston E199

SIRE		EPD	ACC
Birth	+ 1.9	0.48	
Wean	+ 75	0.41	
Milk	+ 17	0.30	
Year	+ 119	0.38	
DAM		EPD	ACC
Birth	+ 0.0	0.00	
Wean	+ 0	0.00	
Milk	+ 0	0.00	
Year	+ 0	0.00	

BW	WW	MILK	YW	Actual	205 Day	205 Day	365 Day	365 Day	Actual
EPD	EPD	EPD	EPD	RW	Weight	Ratio	Weight	Ratio	Scrotal
0.0	0	0	0	73	0	0	0	0	0.00

LOT 16 **NFA 3153**
 Reg. No. Tattoo: 3153 DOB: 03/15/23

Basin Advance 3134
 Basin Deposit 6249
 Basin Lucy 4288

Basin Deposit 1226

WR Journey-1X74
 Basin Lucy 6262
 Basin Lucy 1037

Carter's Payweight 1682-C204
 CW 334 C204 Payweight 187
 CW 027 Queen Eva 334

NFA Earlene J143

H A R B Windy 702 JH
 NFA Earlene G964
 NFA Earlene E424

SIRE		EPD	ACC
Birth	+ 1.9	0.48	
Wean	+ 75	0.41	
Milk	+ 17	0.30	
Year	+ 119	0.38	
DAM		EPD	ACC
Birth	+ 0.0	0.00	
Wean	+ 0	0.00	
Milk	+ 0	0.00	
Year	+ 0	0.00	

BW	WW	MILK	YW	Actual	205 Day	205 Day	365 Day	365 Day	Actual
EPD	EPD	EPD	EPD	RW	Weight	Ratio	Weight	Ratio	Scrotal
0.0	0	0	0	77	0	0	0	0	0.00



DEPOSIT, CONCLUSION & SYNERGY BULLS

LOT 17 **NFA 3167**
 Reg. No. 20937715 Tattoo: 3167 DOB: 03/19/23

Basin Advance 3134
 Basin Deposit 6249
 Basin Lucy 4288

Basin Deposit 1226
 WR Journey-1X74
 Basin Lucy 6262
 Basin Lucy 1037

Silveiras Conversion 8064
 BUBS Southern Charm AA31
 Hickory Hill Erica 009

N F A Lady Katrina J168
 Koupals B&B Endurance 202
 N F A Lady Katrina B504
 N F A Lady Katrina R649

SIRE		EPD	ACC
Birth	+ 1.9	0.48	
Wean	+ 75	0.41	
Milk	I + 17	0.30	
Year	I+ 119	0.38	
DAM		EPD	ACC
Birth	I + 3.4	0.05	
Wean	I + 59	0.05	
Milk	I + 25	0.05	
Year	I + 100	0.05	

BW	WW	MILK	YW	Actual	205 Day	205 Day	365 Day	365 Day	Actual
EPD	EPD	EPD	EPD	RW	Weight	Ratio	Weight	Ratio	Scrotal
0.0	0	0	0	73	0	0	0	0	0.00



LOT 18 **NFA 3132**
 Reg. No. Tattoo: 3132 DOB: 03/07/23

Vin-Mar O'Reilly Factor
 Bushs Easy Decision 98
 Bushs Big Blackbird 7885

FF Conclusion F83
 FF Stimulant Y40
 JF Enskay B80
 Ox Bow Eriskay 254

Carter's Payweight 1682-C204
 CW 334 C204 Payweight 187
 CW 027 Queen Eva 334

NFA Roller Queen G542
 Connealy Cavalry 1149
 NFA Roller Queen B483
 NFA Roller Queen U948

SIRE		EPD	ACC
Birth	+ 4.8	0.80	
Wean	+ 84	0.74	
Milk	+ 24	0.36	
Year	+ 149	0.60	
DAM		EPD	ACC
Birth	+ 0.0	0.00	
Wean	+ 0	0.00	
Milk	+ 0	0.00	
Year	+ 0	0.00	

BW	WW	MILK	YW	Actual	205 Day	205 Day	365 Day	365 Day	Actual
EPD	EPD	EPD	EPD	RW	Weight	Ratio	Weight	Ratio	Scrotal
0.0	0	0	0	95	0	0	0	0	0.00



LOT 19 **NFA 3113**
 Reg. No. Tattoo: 3113 DOB: 02/25/23

CFCC Black Jack 001
 KR Cadillac Jack
 WK Blackbird 5066

KR Synergy
 Summitrest Focus 2U66
 Dickaus 2U66 FW 416
 Dickaus FW Cash 239

Connealy Stimulus 8419
 Connealy Spur
 Jazza of Conanga 8594

NFA Melissa
 NFA Sam Adams W641
 NFA Melissa B522
 NFA Melissa Y149

SIRE		EPD	ACC
Birth	-2.4	0.90	
Wean	+ 69	0.87	
Milk	+ 22	0.53	
Year	+ 110	0.81	
DAM		EPD	ACC
Birth	+ 0.0	0.00	
Wean	+ 0	0.00	
Milk	+ 0	0.00	
Year	+ 0	0.00	

BW	WW	MILK	YW	Actual	205 Day	205 Day	365 Day	365 Day	Actual
EPD	EPD	EPD	EPD	RW	Weight	Ratio	Weight	Ratio	Scrotal
0.0	0	0	0	73	0	0	0	0	0.00



SYNERGY & QUALITY BULLS



LOT 20

LOT 20 **NFA 3273**
 Reg. No. 20938553 **Tattoo: 3273** **DOB: 04/24/23**

KR Cadillac Jack
 KR Synergy Dickaus 2U66 FW 416

Lau Synergy JC 380
 H A R B Denali 788 J H
 Lau Primrose JC 1342
 Lau Primrose JC 866

Limestone Real Mc Coy W831
 Koupals B&B McCoy 5075
 B&B Zara 4066

NFA Princess Maid F205
 Chestnut PF Up Start 760
 NFA Princess Maid A323
 NFA Princess Maid Y155

SIRE		EPD	ACC
Birth	+ 1.0	0.57	
Wean	+ 65	0.49	
Milk	+ 25	0.35	
Year	+ 109	0.44	

DAM		EPD	ACC
Birth	+ 0.7	0.24	
Wean	+ 59	0.21	
Milk	+ 29	0.16	
Year	+ 100	0.17	

BW EPD	VV EPD	MILK EPD	YW EPD	Actual RW	205 Day Weight	205 Day Ratio	365 Day Weight	365 Day Ratio	Actual Scrotal
I +0.9	I +62	I +27	I +105	81	0	0	0	0	0.00

LOT 21 **NFA 3145**
 Reg. No. 20937714 **Tattoo: 3145** **DOB: 03/10/23**

KR Cadillac Jack
 KR Synergy Dickaus 2U66 FW 416

Lau Synergy JC 660
 Bullerman Consensus 1427
 Lau Blackcap JC 1337
 Lau Blackcap JJ 627

A A R Ten X 7008 S A
 Ponca Creek Pepper
 Ponca Creek Blackbird 955

NFA Lady Patrica F806
 Koupals B&B Motive 3032
 NFA Lady Patrica D738
 NFA Lady Patrica B423

SIRE		EPD	ACC
Birth	-0.7	0.58	
Wean	+ 66	0.50	
Milk	+ 22	0.33	
Year	+ 112	0.45	

DAM		EPD	ACC
Birth	+ 3.1	0.26	
Wean	+ 57	0.23	
Milk	+ 24	0.23	
Year	+ 104	0.22	

BW EPD	VV EPD	MILK EPD	YW EPD	Actual RW	205 Day Weight	205 Day Ratio	365 Day Weight	365 Day Ratio	Actual Scrotal
I +1.2	I +62	I +23	I +108	73	0	0	0	0	0.00



LOT 21

LOT 22 **NFA 3114**
 Reg. No. **Tattoo: 3114** **DOB: 02/25/23**

TEF Outside 514
 KR Quality 8525
 KR Lucy Rose 6587

Freys Quality 0187
 BSAR Opportunity 9114
 F A R Miss Blackcap 51A
 F A R Miss Blackcap 75X

Carter's Payweight 1682-C204
 CW 334 C204 Payweight 187
 CW 027 Queen Eva 334

NFA Lady Jane G912
 Koupals B&B Endurance 202
 NFA Lady Jane D276
 NFA Lady Jane T777

SIRE		EPD	ACC
Birth	+ 3.1	0.74	
Wean	+ 79	0.69	
Milk	+ 27	0.32	
Year	+ 147	0.55	

DAM		EPD	ACC
Birth	+ 0.0	0.00	
Wean	+ 0	0.00	
Milk	+ 0	0.00	
Year	+ 0	0.00	

BW EPD	VV EPD	MILK EPD	YW EPD	Actual RW	205 Day Weight	205 Day Ratio	365 Day Weight	365 Day Ratio	Actual Scrotal
0.0	0	0	0	95	0	0	0	0	0.00

LOT 23 **NFA 3116**
 Reg. No. **Tattoo: 3116** **DOB: 02/16/23**

TEF Outside 514
 KR Quality 8525
 KR Lucy Rose 6587

FAR Quality 1151
 Barstow Cash
 F A R Princess 250A
 F A R Princess 214W

Silveiras Conversion 8064
 BUBS Southern Charm AA31
 Hickory Hill Erica 009

NFA Princess of Ellston G527
 Koupals B&B Motive 3032
 NFA Princess of Ellston C622
 NFA Princess of Ellston A318

SIRE		EPD	ACC
Birth	+ 3.2	0.54	
Wean	+ 65	0.47	
Milk	+ 25	0.31	
Year	+ 119	0.39	

DAM		EPD	ACC
Birth	+ 0.0	0.00	
Wean	+ 0	0.00	
Milk	+ 0	0.00	
Year	+ 0	0.00	

BW EPD	VV EPD	MILK EPD	YW EPD	Actual RW	205 Day Weight	205 Day Ratio	365 Day Weight	365 Day Ratio	Actual Scrotal
0.0	0	0	0	71	0	0	0	0	0.00



QUALITY BULLS

LOT 24 **NFA 3124**
 Reg. No. 20937711 **Tattoo: 3124** **DOB: 03/04/23**

TEF Outside 514
 KR Quality 8525
 KR Lucy Rose 6587

FAR Quality 1151
 Barstow Cash
 F A R Princess 250A
 F A R Princess 214W

Limestone Real Mc Coy W831
 Koupals B&B McCoy 5075
 B&B Zara 4066

NFA Ruth H929
 SandPoint Butkus X797
 NFA Ruth D604
 NFA Ruth A491

SIRE		EPD	ACC
Birth	+ 3.2	0.54	
Wean	+ 65	0.47	
Milk	+ 25	0.31	
Year	+ 119	0.39	
DAM		EPD	ACC
Birth	+ 0.0	0.00	
Wean	+ 0	0.00	
Milk	+ 0	0.00	
Year	+ 0	0.00	

BW	WW	MILK	YW	Actual	205 Day	205 Day	365 Day	365 Day	Actual
EPD	EPD	EPD	EPD	RW	Weight	Ratio	Weight	Ratio	Scrotal
0.0	0	0	0	72	0	0	0	0	0.00



LOT 25 **NFA 3161**
 Reg. No. **Tattoo: 3161** **DOB: 03/16/23**

TEF Outside 514
 KR Quality 8525
 KR Lucy Rose 6587

FAR Quality 1151
 Barstow Cash
 F A R Princess 250A
 F A R Princess 214W

NFA Rosella of Ellston H200
 Summitcrest Focus 2U66
 NFA Rosella of Ellston A303
 NFA Rosella of Ellston Y111

SIRE		EPD	ACC
Birth	+ 3.2	0.54	
Wean	+ 65	0.47	
Milk	+ 25	0.31	
Year	+ 119	0.39	
DAM		EPD	ACC
Birth	+ 0.0	0.00	
Wean	+ 0	0.00	
Milk	+ 0	0.00	
Year	+ 0	0.00	

BW	WW	MILK	YW	Actual	205 Day	205 Day	365 Day	365 Day	Actual
EPD	EPD	EPD	EPD	RW	Weight	Ratio	Weight	Ratio	Scrotal
0.0	0	0	0	73	0	0	0	0	0.00



LOT 26 **NFA 3189**
 Reg. No. **Tattoo: 3189** **DOB: 03/26/23**

TEF Outside 514
 KR Quality 8525
 KR Lucy Rose 6587

FAR Quality 1151
 Barstow Cash
 F A R Princess 250A
 F A R Princess 214W

Carter's Payweight 1682-C204
 CW 334 C204 Payweight 187
 CW 027 Queen Eva 334

NFA Clova Pride G537
 Connealy Packer 547
 NFA Clova Pride D644
 NFA Clova Pride W916

SIRE		EPD	ACC
Birth	+ 3.2	0.54	
Wean	+ 65	0.47	
Milk	+ 25	0.31	
Year	+ 119	0.39	
DAM		EPD	ACC
Birth	+ 0.0	0.00	
Wean	+ 0	0.00	
Milk	+ 0	0.00	
Year	+ 0	0.00	

BW	WW	MILK	YW	Actual	205 Day	205 Day	365 Day	365 Day	Actual
EPD	EPD	EPD	EPD	RW	Weight	Ratio	Weight	Ratio	Scrotal
0.0	0	0	0	86	0	0	0	0	0.00

LOT 27 **NFA 3303**
 Reg. No. 20938555 **Tattoo: 3303** **DOB: 05/07/23**

TEF Outside 514
 KR Quality 8525
 KR Lucy Rose 6587

FAR Quality 1151
 Barstow Cash
 F A R Princess 250A
 F A R Princess 214W

Nfa C566
 Koupals B&B Identity
 NFA Karrie A348

NFA Earlene E424
 NFA Sam Adams W641
 NFA Earlene B587
 NFA Earlene U962

SIRE		EPD	ACC
Birth	+ 3.2	0.54	
Wean	+ 65	0.47	
Milk	+ 25	0.31	
Year	+ 119	0.39	
DAM		EPD	ACC
Birth	+ 2.4	0.21	
Wean	+ 55	0.17	
Milk	+ 26	0.13	
Year	+ 104	0.14	

BW	WW	MILK	YW	Actual	205 Day	205 Day	365 Day	365 Day	Actual
EPD	EPD	EPD	EPD	RW	Weight	Ratio	Weight	Ratio	Scrotal
I +2.8	I +60	I +26	I +112	89	0	0	0	0	0.00

BULLS ARE SEMEN TESTED AND READY TO GO TO WORK!



QUALITY & UNDISPUTED BULLS

LOT 28 **NFA 3202**
 Reg. No. 20938352 **Tattoo: 3202** **DOB: 03/29/23**

TEF Outside 514
 KR Quality 8525
 KR Lucy Rose 6587

FAR Quality 1151
 Barstow Cash
 F A R Princess 250A
 F A R Princess 214W

Young Dale Xcaliber 32X
 Freys Appearance
 F A R Missie 62Y

NFA Becky Edella G934
 Koupals B&B Identity
 NFA Becky Edella D154
 NFA Becky Edella W978

SIRE		EPD	ACC
Birth	+ 3.2	0.54	
Wean	+ 65	0.47	
Milk	+ 25	0.31	
Year	+ 119	0.39	

DAM		EPD	ACC
Birth	+ 3.0	0.23	
Wean	+ 62	0.22	
Milk	+ 28	0.22	
Year	+ 106	0.20	

BW	WW	MILK	YW	Actual	205 Day	205 Day	365 Day	365 Day	Actual
EPD	EPD	EPD	EPD	RW	Weight	Ratio	Weight	Ratio	Scrotal
I +3.1	I +64	I +27	I +113	97	0	0	0	0	0.00



LOT 29 **NFA 3296**
 Reg. No. **Tattoo: 3296** **DOB: 05/04/23**

KR Outfit
 Freys Undisputed
 F A R Princess 250A

FAR Undisputed 1273
 Freys Opportunity 148A
 FAR Bonnie Brae 8277
 F A R Bonnie Brae 235Z

Carter's Payweight 1682-C204
 CW 334 C204 Payweight 187
 CW 027 Queen Eva 334

NFA Lady H997
 S/C Medicine Man 01Y7
 NFA Lady C529
 NFA Lady A410

SIRE		EPD	ACC
Birth	+ 1.3	0.53	
Wean	+ 70	0.45	
Milk	+ 35	0.27	
Year	+ 120	0.37	

DAM		EPD	ACC
Birth	+ 0.0	0.00	
Wean	+ 0	0.00	
Milk	+ 0	0.00	
Year	+ 0	0.00	

BW	WW	MILK	YW	Actual	205 Day	205 Day	365 Day	365 Day	Actual
EPD	EPD	EPD	EPD	RW	Weight	Ratio	Weight	Ratio	Scrotal
0.0	0	0	0	82	0	0	0	0	0.00

LOT 30 **NFA 3257**
 Reg. No. **Tattoo: 3257** **DOB: 04/19/23**

KR Outfit
 Freys Undisputed
 F A R Princess 250A

FAR Undisputed 1273
 Freys Opportunity 148A
 FAR Bonnie Brae 8277
 F A R Bonnie Brae 235Z

A A R Ten X 7008 S A
 Ponca Creek Pepper
 Ponca Creek Blackbird 955

NFA Blair H909
 NFA Sam Adams W641
 NFA Blair A416
 NFA Blair U964

SIRE		EPD	ACC
Birth	+ 1.3	0.53	
Wean	+ 70	0.45	
Milk	+ 35	0.27	
Year	+ 120	0.37	

DAM		EPD	ACC
Birth	+ 0.0	0.00	
Wean	+ 0	0.00	
Milk	+ 0	0.00	
Year	+ 0	0.00	

BW	WW	MILK	YW	Actual	205 Day	205 Day	365 Day	365 Day	Actual
EPD	EPD	EPD	EPD	RW	Weight	Ratio	Weight	Ratio	Scrotal
0.0	0	0	0	75	0	0	0	0	0.00



BIRTH WEIGHT & CALVING EASE

University studies in Wyoming and data from Montana and Colorado lend credence to the following conclusions:

1. The birth weight itself influences calving ease by 65%.
2. The female has 60-70% influence on birth weight of her calf.
3. The bull has 30-40% influence on birth weight of his progeny.
4. Pelvic measurement and angle as well as the shape of the calf have 35-40% influence on calving ease.
5. Length of gestation greatly affects birth weight. A fetus can gain over one pound per day in the last days of gestation.
6. Weather and temperature the last 30 days affect the length of gestation.
7. Size and maturity of the cow influence calving ease.

Most commercial producers do not take birth weights. Guessing is as inaccurate as driving with a broken speedometer – what's thought to be 55 mph may in fact be 65 or 70 mpg, and what's thought to be 70-80 lb. may actually be 80-90 lb. Remember, everything is relevant. Increased growth, frame and performance will increase BW. A longer-bodied calf will weigh more. If a calf is expected to have genetics for growth, it will display this prior to birth as well as after. As a rule of thumb, it takes a calf weighing 85 lb. at birth to finish at 1200-1250 lb. A cow should easily give birth to a calf weighing 8% of her own body weight. Thus, a 1200 lb. cow should give birth to a 96 lb. calf with ease.

Continued selection for light birth weights will ultimately reduce the mature sizes and performance of your cattle.

Angus bulls have long been known for their paramount calving ease. If you are breeding heifers, Angus is the go-to breed of choice. But what about the so-called "big" birth weight Angus bulls - where do they fit in? The vast majority of mature cows calve unassisted - it is pretty rare for a mature cow to need assistance, except for abnormal deliveries (backwards, breech, twins, etc.). Data reported to the AAA shows that 99% of Angus cows, second calf or beyond, calve unassisted and only 1% need some type of assistance (abnormal deliveries excluded from this data.) Back to the question at hand: where do the "big" birth weight Angus bulls fit in? Example: If you have a bull with a Birth EPD of +5, he would be 3.2 pounds heavier than the average (breed average BW EPD 1.8) ($5 - 1.8 = 3.2$ pounds difference.) However, his superior growth EPDs mean he will wean bigger calves and put way more money in your pocket than the average Angus bull! The moral of the story: If you are breeding mature cows to an Angus bull, don't make birth weight be your focus.





15207 331ST AVE
ONAKA, SD 57466



25th Annual Bull Sale
FRIDAY MAY 3, 2024

1:00 PM • Hub City Livestock, Aberdeen, SD

